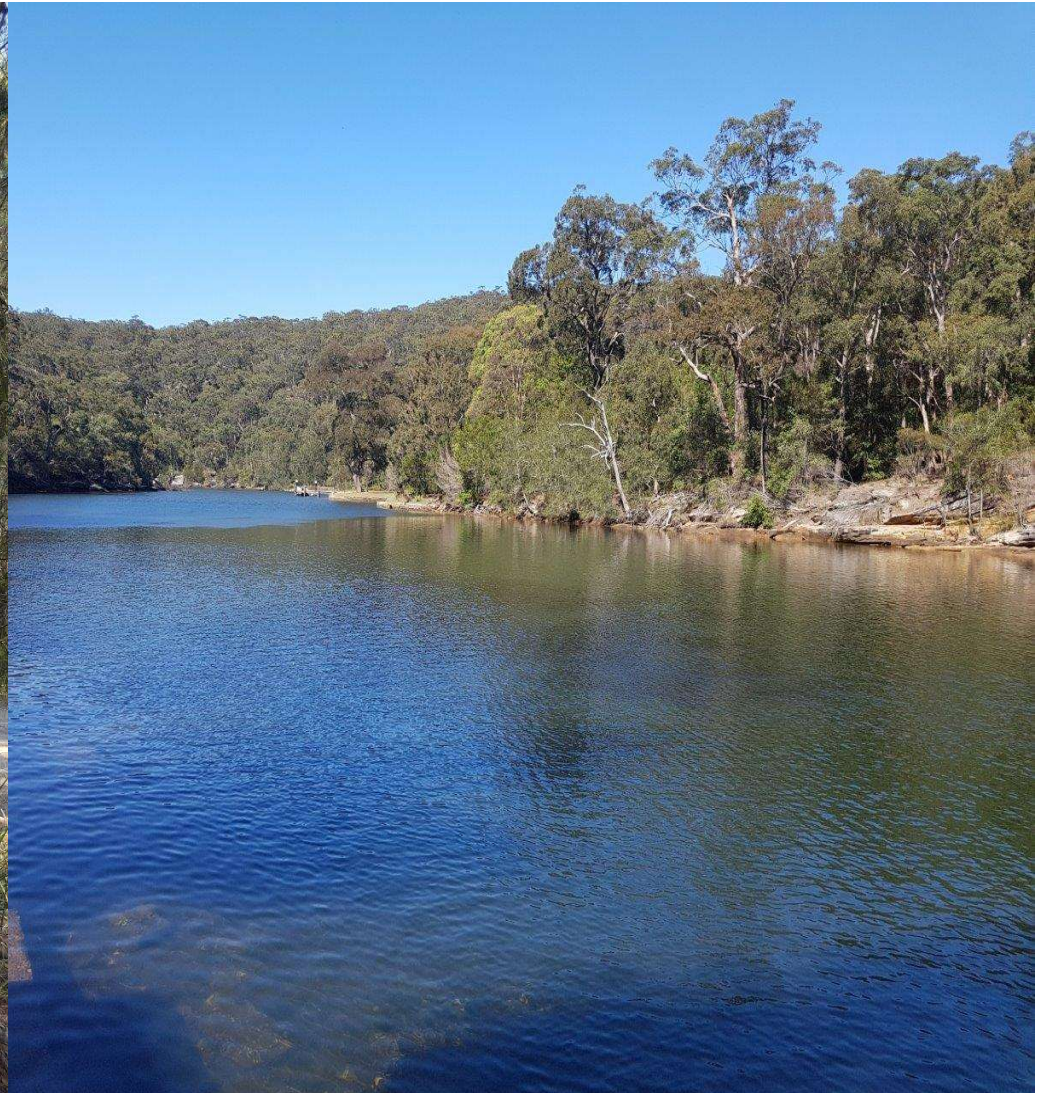


# NANOTECH CIVIL

**Cullen Lane Access Track, MAIANBAR, NSW**

**November, 2019**

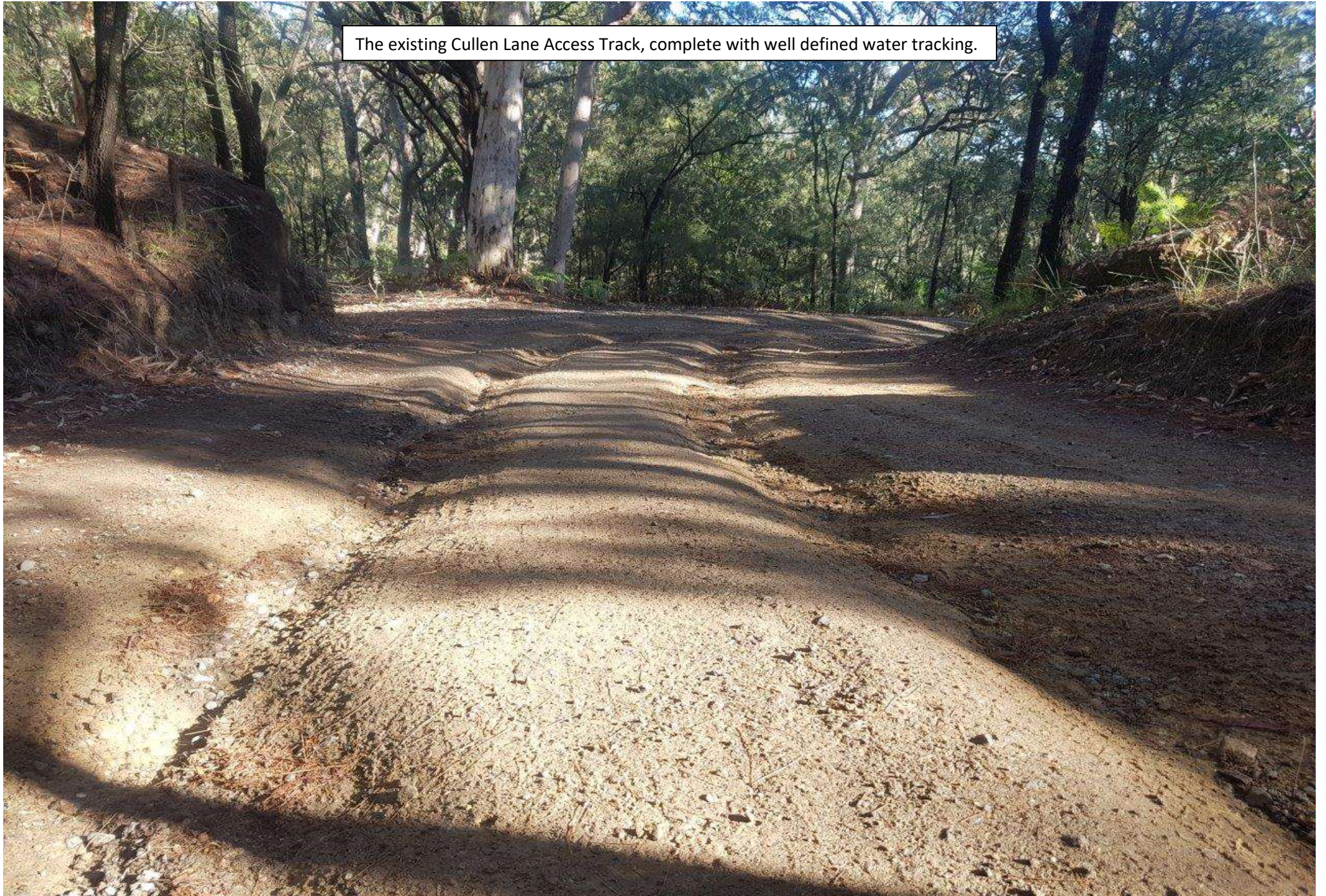
Treated by **TERRA-3000(R)**



The excellent environmental credentials of TERRA-3000® were given the best possible nod of approval, when it was agreed that Nanotech Civil could use it to treat an access track that was experiencing heavy erosional issues. This particular access track is located deep within The Royal National Park just south of Sydney.

The Royal National Park is the second Oldest National Park in the world, and is included on The Australian National Heritage List. It goes without saying that Nanotech Civil was proud to be able to operate in such a unique and well respected environment, and to also contribute towards solving a real environmental problem with a world class environmentally friendly product.

The existing Cullen Lane Access Track, complete with well defined water tracking.







Removal of all organic material from the road and table drains



Ripping the existing road down to its natural base



Stabilisation liquid is measured and added to the water truck



Application directly onto the ripped road material ready for mixing



Turning over the ripped sub-grade to "blade-mix" the stabilisation aid through the material



Once mixing is complete, heavy static pressure is applied to activate the reaction within the treated material



The completed road is left to dry out naturally



The finished surface is tightly locked together. Treated soils are able to achieve far greater compaction levels than untreated soils.

