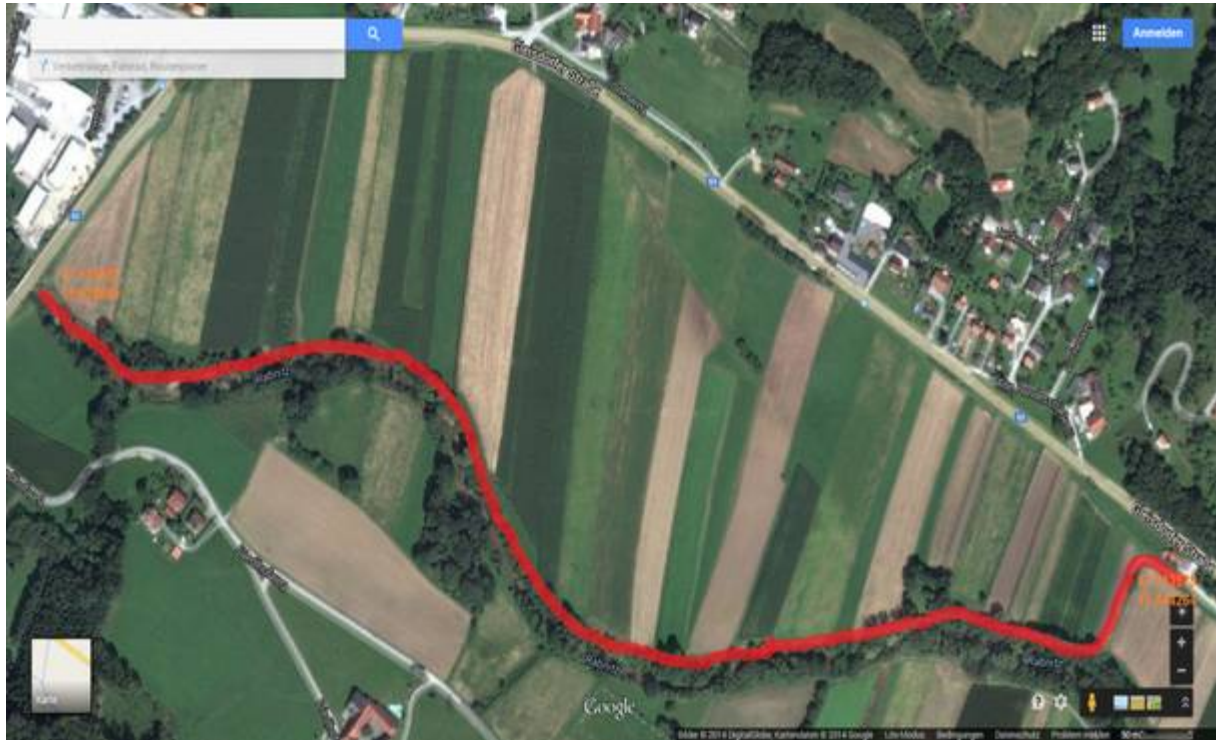




## Project Brodersdorf 2013/14



### Rural road

Client: Municipality Brodersdorf and Office of the Styrian Provincial Government

Google maps: beginning  
Aufzugweg  
8200  
47.113527, 15.644134

ending  
Gleisdorfer Straße  
8063  
47.116561, 15.630581

Length: 1850 m  
Width: 4 m  
Surface: gravel (16/32mm)



Before working – oct. 2013





During the work – oct. 2013











The wether would be bad and we must stop the work and we finished the work at the end of may 2014



## May 2014

